

Customer :

customer

Customer part :

customer part

Comment :

Comment

S1=0.76

S2=12.52

Tmax=441

Tp S2=480.0

PI=0.06

HI=245

Sample =9107

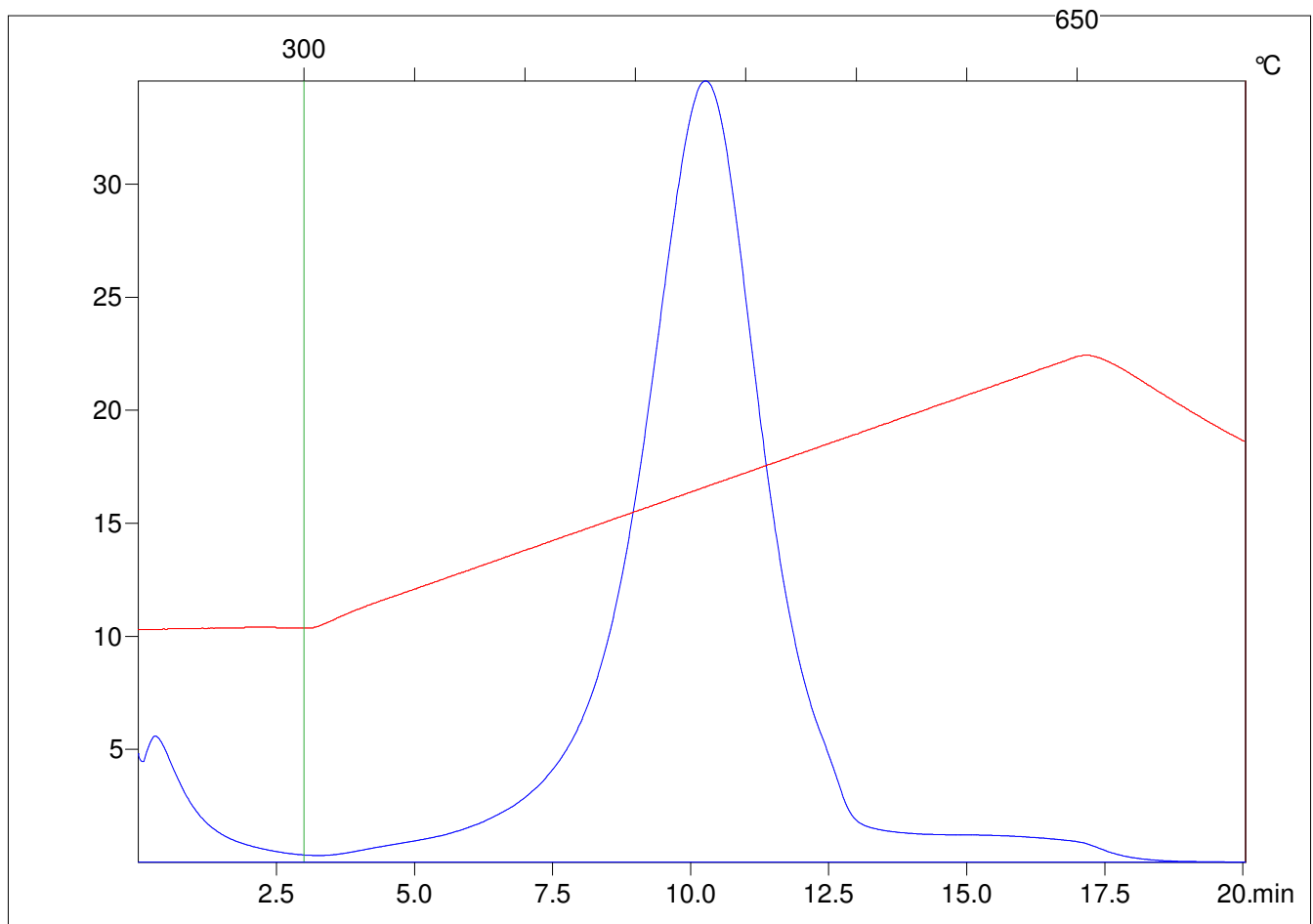
Method =Bulk Rock

Cycle=Basic

KFID(10*9)=1444

Qty =70.4

TOC=5.1



C:\VINC\PK3_1792\PK055.R00 : FID pyrolysis graphic

State

Pyro Status

Oxi Status